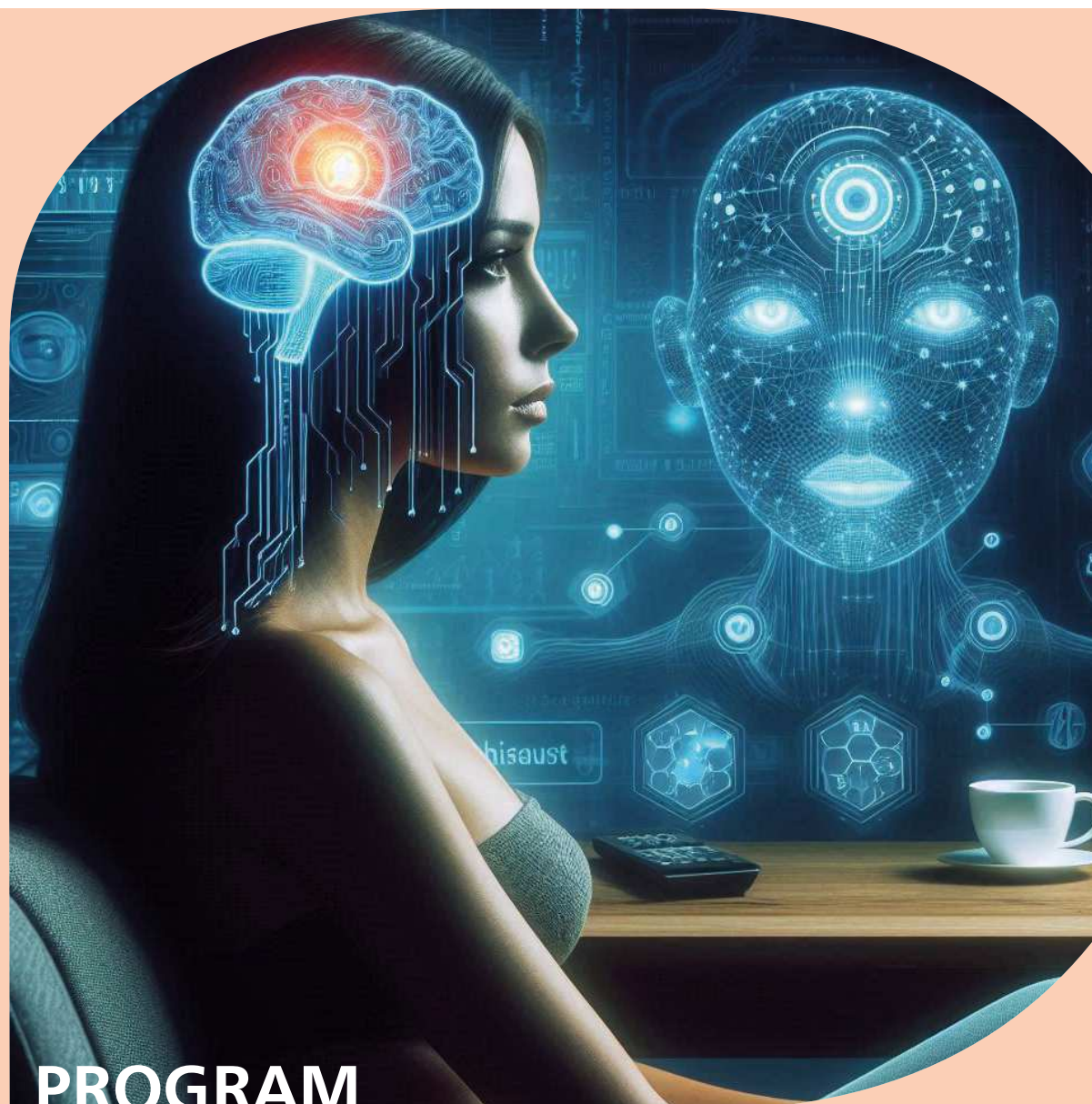


Seminar

From trust in AI toward dependance on AI

*Key research questions
with regards to human
use of AI*



PROGRAM

NAPOLI

25 | 11 | 2024 | 10 a.m.

CNR-ISMed

Sala Convegni Polo Umanistico
Via Cardinale Guglielmo Sanfelice, 8
VI floor

ORGANIZERS

Department of Social sciences and humanities, cultural heritage, National Research Council of Italy (CNR-DSU) and Institute for Studies on the Mediterranean, National Research Council of Italy (CNR-ISMed)

SCIENTIFIC AND ORGANIZING COMMITTEE

Salvatore Capasso, CNR-DSU
Luisa Errichiello, CNR-ISMed
Antonio Rossi, CNR-ISMed

PARTICIPATION INFORMATION

The in-person event is open to the public, subject to seat availability, and requires registration by November 23, 2024.
To register, please write to: antonio.rossi@ismed.cnr.it
(this address is also valid for inquiries and contact).

The event will also be streamed online via the Microsoft Teams platform. A connection link will be sent to those who register.

The lecture will discuss key insights from a review of empirical research on trust in AI, conducted by Ella Glikson in collaboration with Anita W. Woolley, and published in 2020 in the Academy of Management Annals.

The seminar will explore issues related to the definitions of AI and explain the embodiment and pro-activeness frameworks. Focusing on the factors that influence human trust in AI, the presenter will demonstrate how an experimental design can be used to investigate questions surrounding human-AI interactions. She will also address the limitations of the experimental approach and highlight the benefits of combining methodologies to develop and test theory.

Institutional Greetings

Salvatore Capasso

Director of the CNR-DSU

Gabriella Corona

Director of the CNR-ISMed

Chair

Luisa Errichiello

Senior Researcher CNR-ISMed

CNR-ISMed Proponent within the CNR Research Program
"Short Term Mobility 2024"

*The joint project between CNR-ISMed
and Bar Ilan University Business School:
"A Model of Social Integration for Remote,
Hybrid, and Co-located Workers"*

Speaker

Ella Glikson

Senior Lecturer Bar Ilan University Business School
CNR-ISMed Beneficiary within the CNR Research Program
"Short Term Mobility 2024"

*The implications of Artificial Intelligence
on human trust and the opportunities
for experimental research*

Questions and answers

